

Automotive



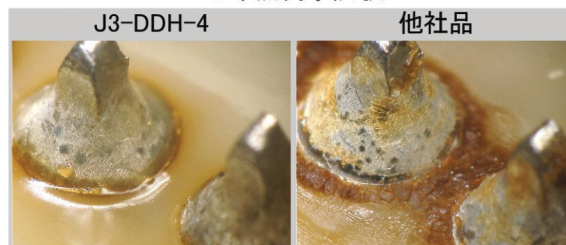
EVASOL J3-DDH-4

- Lead free
- MIL-RMA
- IPC-REL1
- ISO-1.2.2.X
- JIS-AA

- Product Develop with DENSO
- No Flux Residue Cracks & High Reliability
- Can soldering by soldering iron tip & laser

No Flux Cracks

●冷熱衝撃試験



1000サイクル後も残渣の割れ、剥離が無く、高い信頼性を保持
【条件】 -30↔110℃各30分
1000サイクル



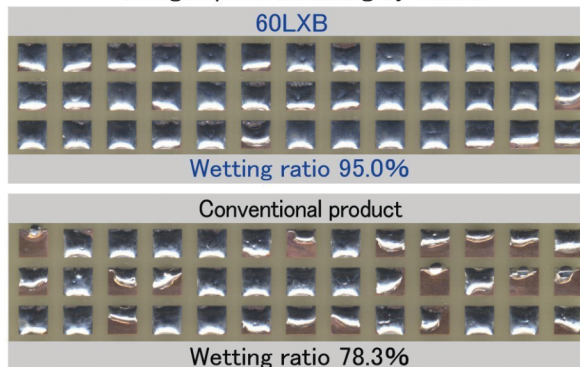
SUPER ROSIN 60/63LXB

- Tin lead
- MIL-RA
- IPC-ROH1
- ISO-1.1.2.Y
- JIS-B

- Good activated power & high wettability speed
- Low spattering
- Less smoke & smell

Good wettability, workability in short time

●High speed soldering by Robot



For Laser EVASOL J3-DTR-4

- Lead free
- MIL-RMA
- IPC-REL1
- ISO-1.2.2.X
- JIS-AA

- Can soldering by laser
- Low Spattering

High Reliability SUPER ROSIN 60/63GXR

- Tin Lead
- MIL-RMA
- IPC-ROL1
- ISO-1.2.2.X
- JIS-AA

- High Reliability
- Good Wettability

Workability EVASOL J3-MTS-4

- Lead free
- MIL-RMA
- IPC-ROL1
- ISO-1.1.2.X
- JIS-A

- Good Wettability in short working time.
- Good Wettability even in low soldering temperature.

Low Spattering SUPER ROSIN 60/63GXM

- Tin Lead
- MIL-RMA
- IPC-ROL1
- ISO-1.1.2.X
- JIS-A

- Low Spattering
- Good Wettability