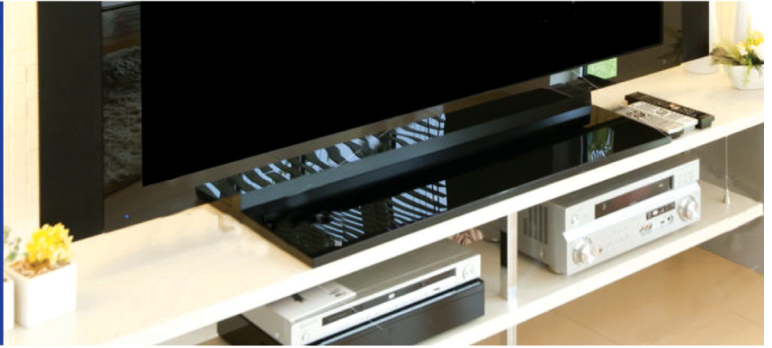


Home electrical appliance



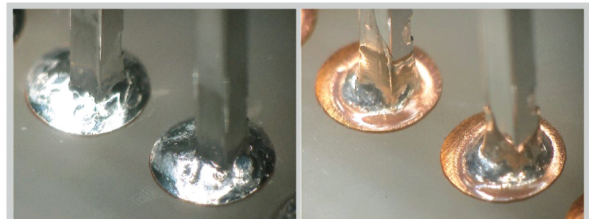
EVASOL J3-MKT-3

- Lead free
- MIL-RMA
- IPC-RO1
- ISO-1.1.2.X
- JIS-A

- Good Wettability.
- Low spattering
- Less smoke & smell

Excellent Wettability

● Wettability test for through hole pad



J3-MKT-3

Conventional product

By soldering robot, connector soldering in through hole by fix low temp and short time.

【Condition】 Iron temp.:330°C Soldering time:1.6sec



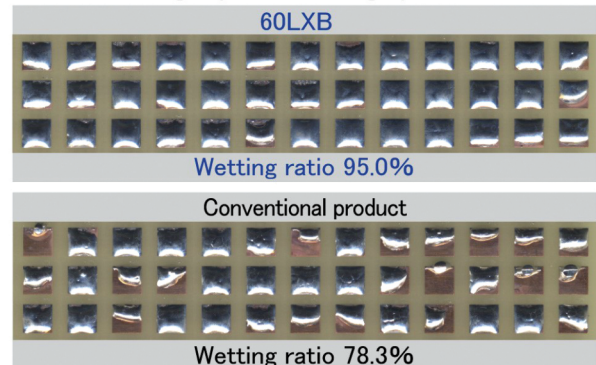
SUPER ROSIN 60/63LXB

- Tin lead
- MIL-RA
- IPC-ROH1
- ISO-1.1.2.Y
- JIS-B

- Good activated power & high wettability speed
- Low spattering
- Less smoke & smell

Good wettability, workability in short time

● High speed soldering by Robot



Wetting ratio 95.0%

Conventional product

Wetting ratio 78.3%

For Laser

EVASOL J3-DTS-4

- Lead free
- MIL-RA
- ISO-1.2.2.Y
- IPC-REM1
- JIS-A

- Solder by laser and light beam.
- No Spattering.

Water Soluble

SUPER ROSIN 60/63WSM

- Tin Lead
- MIL-WSF-1
- ISO-2.1.2.Y
- IPC-REH1
- JIS-B

- Flux Residue can clean by normal water
- Excellent Wettability

Workability

EVASOL J3-ATS-4

- Lead free
- MIL-RA
- ISO-1.1.2.Y
- IPC-ROM1
- JIS-A

- Good wettability in short working time.
- Good wettability even in low soldering temp.

Low Spattering

EVASOL J3-ARK-4

- Lead free
- MIL-RA
- ISO-1.1.2.Y
- IPC-ROM1
- JIS-A

- No Spattering
- All devices are clean